

**MEDICENTUR**

Material. Design. Optics.



**IOL Portfolio**



[www.medicontur.com](http://www.medicontur.com)

# About us

Our company is constantly striving for innovation in order to help patients with various vision related problems.

Since its founding in 1989 Medicontur has developed into one of the major players in the field of cataract and refractive surgery.

Our lens portfolio provides a solution for a range of eye conditions including cataract, presbyopia, astigmatism, dry AMD, and colour vision deficiency.

**30+**

33 years  
of experience

**7+m**

intraocular lenses  
implanted

**over 60**

international  
markets

Active presence in

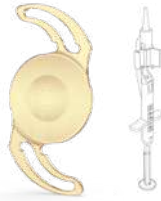


*Medicontur presence worldwide*

TRIFOCAL IOLS

PRELOADED

NON-PRELOADED



677CMY

677CMTY

640CMY

677MY

Liberty Preloaded

Liberty Toric Preloaded

Q-Flex Trifocal Preloaded

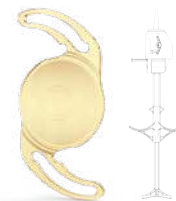
Liberty

Standard Powers	+8.0 D → +30.0 D (0.5 D steps)		+8.0 D → +30.0 D (0.5 D steps)		+8.0 D → +30.0 D (0.5 D steps)		+8.0 D → +30.0 D (0.5 D steps)	
Extreme Powers	+30.5 D → +35.0 D (0.5 D steps)		+30.5 D → +35.0 D (0.5 D steps)		+30.5 D → +35.0 D (0.5 D steps)		+30.5 D → +35.0 D (0.5 D steps)	
Cylinders	-		1.0 D	1.5 D	2.0 D	2.5 D	3.0 D	-
			3.5 D	4.0 D	4.5 D	5.25 D*	6.0 D*	
Addition	+3.5 D near +1.75 D intermediate		+3.5 D near +1.75 D intermediate		+3.5 D near +1.75 D intermediate		+3.5 D near +1.75 D intermediate	
Material	Copolymer of hydrophobic and hydrophilic monomers with 25% water content, UV blocker and blue light filter		Copolymer of hydrophobic and hydrophilic monomers with 25% water content, UV blocker and blue light filter		Copolymer of hydrophobic and hydrophilic monomers with 25% water content, UV blocker and blue light filter		Copolymer of hydrophobic and hydrophilic monomers with 25% water content, UV blocker and blue light filter	
RI   Abbe Number	1.46	58	1.46	58	1.46	58	1.46	58
Optic Design	Aspheric - Aberration Neutral Biconvex (+8.0 D → +35.0 D)		Aspheric - Aberration Neutral Biconvex (+8.0 D → +35.0 D)		Aspheric - Aberration Neutral Biconvex (+8.0 D → +35.0 D)		Aspheric - Aberration Neutral Biconvex (+8.0 D → +35.0 D)	
Diffraction or EDOF Zone	3 mm diameter diffractive array on the anterior surface utilizing EPS technology		3 mm diameter diffractive array on the anterior surface utilizing EPS technology		3 mm diameter diffractive array on the anterior surface utilizing EPS technology		3 mm diameter diffractive array on the anterior surface utilizing EPS technology	
Optic Diameter	6 mm		6 mm		6 mm		6 mm	
Overall Diameter	13 mm		13 mm		11.0 mm (8.0 D → +15.0 D) 10.7 mm (+15.5 D → +35.0 D)		13 mm	
Haptic Design	Posterior vaulting fenestrated C-loops with 0° angulation		Posterior vaulting fenestrated C-loops with 0° angulation		Posterior vaulting 4 closed loops with 0° angulation		Posterior vaulting fenestrated C-loops with 0° angulation	
PCO Prevention	360° sharp edge		360° sharp edge		360° sharp edge		360° sharp edge	
Shelf Life	3 years after sterilization		3 years after sterilization		3 years after sterilization		5 years after sterilization	

\*available above +10.0 D SEQ

EDOF IOL

PRELOADED



677MTY

640MY

877PEY

Liberty Toric

Q-Flex Trifocal

Bi-Flex ELON POB-MA

+8.0 D → +30.0 D (0.5 D steps)

+8.0 D → +30.0 D (0.5 D steps)

+8.0 D → +30.0 D (0.5 D steps)

+30.5 D → +35.0 D (0.5 D steps)

+30.5 D → +35.0 D (0.5 D steps)

+31.0 D → +35.0 D (1.0 D steps)

1.0 D 1.5 D 2.0 D 2.5 D 3.0 D

3.5 D 4.0 D 4.5 D 5.25 D\* 6.0 D\*

+3.5 D near  
+1.75 D intermediate

+3.5 D near  
+1.75 D intermediate

Copolymer of hydrophobic and hydrophilic monomers with 25% water content, UV blocker and blue light filter

Copolymer of hydrophobic and hydrophilic monomers with 25% water content, UV blocker and blue light filter

Hydrophobic acrylic with UV blocker and blue light filter

1.46

58

1.46

58

1.47

58

Aspheric - Aberration Neutral Biconvex (+8.0 D → +35.0 D)

Aspheric - Aberration Neutral Biconvex (+8.0 D → +35.0 D)

Aspheric - Aberration Neutral Biconvex (+8.0 D → +35.0 D)

3 mm diameter diffractive array on the anterior surface utilizing EPS technology

3 mm diameter diffractive array on the anterior surface utilizing EPS technology

Refraction-based central Wavefront Linking zones

6 mm

13 mm

6 mm  
11.0 mm (8.0 D → +15.0 D)  
10.7 mm (+15.5 D → +35.0 D)

6 mm

13 mm

Posterior vaulting fenestrated C-loops with 0° angulation

Posterior vaulting 4 closed loops with 0° angulation

Posterior vaulting fenestrated C-loops with 0° angulation

360° sharp edge

360° sharp edge

360° sharp edge

5 years after sterilization

5 years after sterilization

2.5 years after sterilization

# EDOF by ELON Bi-Flex platform



## MONOFOCAL IOLS

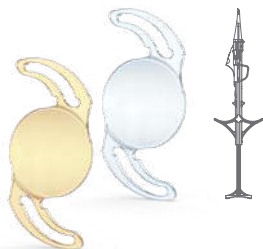
## PRELOADED

## NON-PRELOADED


**3! POB-MA**  
 FLEX | HYDROPHOBIC PRELOADED

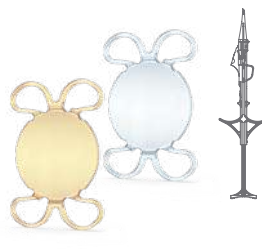
877PA | 877PAY

Bi-Flex POB-MA


**3! PIL-MA**  
 FLEX | HYDROPHILIC PRELOADED

677P | 677PY

Bi-Flex Preloaded


**Q PIL-MA**  
 FLEX | HYDROPHILIC PRELOADED

640P | 640PY

Q-Flex Preloaded


**3! FLEX HB**

877FAB | 877FABY

Bi-Flex HB

Standard Powers	0.0 D → +9.0 D (1.0 D steps) +10.0 D → +30.0 D (0.5 D steps)		0.0 D → +30.0 D (0.5 D steps)		0.0 D → +9.0 D (1.0 D steps) +10.0 D → +30.0 D (0.5 D steps)		0.0 D → +9.0 D (1.0 D steps) +10.0 D → +30.0 D (0.5 D steps)	
Extreme Powers	-10.0 D → -1.0 D (1.0 D steps) +31.0 D → +35.0 D (1.0 D steps)		-10.0 D → -1.0 D (1.0 D steps) +31.0 D → +35.0 D (1.0 D steps)		+31.0 D → +35.0 D (1.0 D steps)		+31.0 D → +35.0 D (1.0 D steps)	
Cylinders	-		-		-		-	
Addition	-		-		-		-	
Material	Hydrophobic acrylic with UV blocker and optional blue light filter		Copolymer of hydrophobic and hydrophilic monomers with 25% water content, UV blocker and optional blue light filter		Copolymer of hydrophobic and hydrophilic monomers with 25% water content, UV blocker and optional blue light filter		Hydrophobic acrylic with UV blocker and optional blue light filter	
RI   Abbe Number	1.47	58	1.46	58	1.46	58	1.47	58
Optic Design	Aspheric - Aberration Neutral Biconcave (-10.0 D → -1.0 D) Biconvex (0.0 D → +35.0 D)		Aspheric - Aberration Neutral Convex-concave (-10.0 D → -1.0 D) Biconvex (0.0 D → +35.0 D)		Aspheric - Aberration Neutral Biconvex (0.0 D → +35.0 D)		Aspheric - Aberration Neutral Biconvex (0.0 D → +35.0 D)	
Diffractive or EDOF Zone	-		-		-		-	
Optic Diameter	6 mm		6 mm		6 mm		6 mm	
Overall Diameter	13 mm		13 mm		11.0 mm (0.0 D → +15.0 D) 10.7 mm (+15.5 D → +35.0 D)		13 mm	
Haptic Design	Posterior vaulting fenestrated C-loops with 0° angulation		Posterior vaulting fenestrated C-loops with 0° angulation		Posterior vaulting 4 closed loops with 0° angulation		Posterior vaulting fenestrated C-loops with 0° angulation	
PCO Prevention	360° sharp edge		360° sharp edge		360° sharp edge		360° sharp edge	
Shelf Life	2.5 years after sterilization		3 years after sterilization		3 years after sterilization		5 years after sterilization	



**3!** | FLEX HL

677AD | 677ADY

Bi-Flex

0.0 D → +9.0 D (1.0 D steps)  
+10.0 D → +30.0 D (0.5 D steps)

-10.0 D → -1.0 D (1.0 D steps)  
+31.0 D → +45.0 D (1.0 D steps)

-

-

Copolymer of hydrophobic and hydrophilic monomers with 25% water content, UV blocker and optional blue light filter

1.46

58

Aspheric - Aberration Neutral  
Convex-concave (-10.0 D → -1.0 D)  
Biconvex (0.0 D → +45.0 D)

-

6 mm  
13 mm

Posterior vaulting fenestrated  
C-loops with 0° angulation

360° sharp edge

5 years after sterilization



**Q** | FLEX

640AD | 640ADY

Q-Flex

0.0 D → +9.0 D (1.0 D steps)  
+10.0 D → +30.0 D (0.5 D steps)

+31.0 D → +35.0 D (1.0 D steps)

-

-

Copolymer of hydrophobic and hydrophilic monomers with 25% water content, UV blocker and optional blue light filter

1.46

58

Aspheric - Aberration Neutral  
Biconvex (0.0 D → +35.0 D)

-

6 mm  
11.0 mm (0.0 D → +15.0 D)  
10.7 mm (+15.5 D → +35.0 D)

Posterior vaulting 4 closed loops  
with 0° angulation

360° sharp edge

5 years after sterilization

## MONOFOCAL TORIC IOLS

PRELOADED

NON-PRELOADED



**3!** | FLEX T  
Accuject PRO

677CTA | 677CTAY

Bi-Flex Toric Preloaded

8.0 D → +30.0 D (0.5 D steps)

+31.0 D → +35.0 D (1.0 D steps)

1.0 D 1.5 D 2.25 D 3.0 D  
3.75 D 4.5 D 5.25 D 6.0 D

-

Copolymer of hydrophobic and hydrophilic monomers with 25% water content, UV blocker and optional blue light filter

1.46

58

Aspheric - Aberration Neutral  
Biconvex (8.0 D → +35.0 D)

-

6 mm  
13 mm

Posterior vaulting fenestrated  
C-loops with 0° angulation

360° sharp edge

3 years after sterilization



**3!** | FLEX T

677TA | 677TAY

Bi-Flex Toric\*

0.0 D → +30.0 D (0.5 D steps)

-10.0 D → -1.0 D (1.0 D steps)  
+31.0 D → +35.0 D (1.0 D steps)

1.0 D 1.5 D 2.25 D 3.0 D  
3.75 D 4.5 D 5.25 D 6.0 D

-

Copolymer of hydrophobic and hydrophilic monomers with 25% water content, UV blocker and optional blue light filter

1.46

58

Aspheric - Aberration Neutral  
Convex-concave (-10.0 D → +5.0 D)  
Biconvex (+5.5 D → +35.0 D)

-

6 mm  
13 mm

Posterior vaulting fenestrated  
C-loops with 0° angulation

360° sharp edge

5 years after sterilization

\*Extreme cylinders available: +6.75 D, +7.5 D, +8.25 D, +9.0 D, +10.0 D

## SECONDARY SULCUS IOLS

## NON-PRELOADED



1stQ AddOn®

A46R

1stQ AddOn® Refractive

1stQ AddOn®

A45RT

1stQ AddOn® Refractive Toric

1stQ AddOn®

A45RD2

1stQ AddOn® Trifocal

1stQ AddOn®

A45DT

1stQ AddOn® Trifocal Toric

Standard Powers	-10.0 D → +10.0 D (0.25 D steps)		-10.0 D → +10.0 D (0.25 D steps)		-5.0 D → +5.0 D (0.25 D steps)		-3.0 D → +3.0 D (0.5 D steps)	
Extreme Powers	-		-		-		-	
Cylinders	-		+1.0 D +1.5 D → +9.0 D (0.75 D steps) +10.0 D, +11.0 D*		-		+1.0 D → +4.5 D (0.5 D steps)	
Addition	-		-		+3.0 D near +1.5 D intermediate		+3.0 D near +1.5 D intermediate	
Material	Copolymer of hydrophobic and hydrophilic monomers with 25% water content and UV blocker		Copolymer of hydrophobic and hydrophilic monomers with 25% water content and UV blocker		Copolymer of hydrophobic and hydrophilic monomers with 25% water content and UV blocker		Copolymer of hydrophobic and hydrophilic monomers with 25% water content and UV blocker	
RI   Abbe Number	1.46	58	1.46	58	1.46	58	1.46	58
Optic Design	Aspheric - Aberration Neutral Convex-concave (-10.0 D → +10.0 D)		Aspheric - Aberration Neutral Convex-concave (-10.0 D → +10.0 D)		Aspheric - Aberration Neutral Convex-concave (-5.0 D → +5.0 D)		Aspheric - Aberration Neutral Convex-concave (-3.0 D → +3.0 D)	
Diffractive or EDOF Zone	-		-		3 mm diameter diffractive array on the anterior surface utilizing EPS technology		3 mm diameter diffractive array on the anterior surface utilizing EPS technology	
Optic Diameter	6 mm		6 mm		6 mm		6 mm	
Overall Diameter	13 mm		13 mm		13 mm		13 mm	
Haptic Design	Special 4 closed loops with 0° angulation		Special 4 closed loops with 0° angulation		Special 4 closed loops with 0° angulation		Special 4 closed loops with 0° angulation	
PCO Prevention	-		-		-		-	
Shelf Life	5 years after sterilization		5 years after sterilization		5 years after sterilization		5 years after sterilization	

\*available for SEQ range: -3.0 D → +8.0 D





# 1st Q AddOn®

**SML** | SCHARIOTH  
MACULA LENS

**A45SML**

SML

-4.0 D → +4.0 D (0.5 D steps)

-

-

+10 D

Copolymer of hydrophobic and hydrophilic monomers with 25% water content and UV blocker

1.46

58

Aspheric - Aberration Neutral  
Convex-concave (-4.0 D → +4.0 D)

-

6 mm

13 mm

Special 4 closed loops with  
0° angulation

-

5 years after sterilization



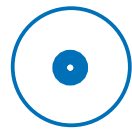
# Constants table

		Nominal A-constant	SRK/T A-constant	Haigis (a <sub>1</sub> )	Haigis (a <sub>2</sub> )	Haigis (a <sub>3</sub> )	Hoffer Q (pACaD)	Holladay I (SF)	Holladay II (ACD)**	Holladay II (SF)**	Barrett Universal II (Lens Factor)**
Liberty Preloaded	677CMY	118,9	118.828*	0.190*	0.192*	0.173*	5.431*	1.682*	5,45	1,69	1,79
Liberty Toric Preloaded	677CMTY	118,9	118.828*	0.190*	0.192*	0.173*	5.431*	1.682*	5,45	1,69	1,79
Q-Flex Trifocal Preloaded	640CMY	118,9	118,9	1,243	0.400	0.100	5,46	1,67	5,49	1,73	1,83
Liberty	677MY	118,9	118.828*	0.190*	0.192*	0.173*	5.431*	1.682*	5,45	1,69	1,79
Liberty Toric	677MTY	118,9	118.828*	0.190*	0.192*	0.173*	5.431*	1.682*	5,45	1,69	1,79
Q-Flex Trifocal	640MY	118,9	118,9	1,243	0.400	0.100	5,46	1,67	5,49	1,73	1,83
Bi-Flex ELON POB-MA	877PEY	118,9	118,9	1.320	0.400	0.100	5,46	1,7	5,49	1,73	1,83
Bi-Flex POB-MA	877PA(Y)	118,9	118,9	1.320	0.400	0.100	5,46	1,7	5,49	1,73	1,83
Bi-Flex Preloaded	677P(Y)	118,9	118.828*	0.190*	0.192*	0.173*	5.431*	1.682*	5,45	1,69	1,79
Q-Flex Preloaded	640P(Y)	118,9	118,9	1,243	0.400	0.100	5,46	1,67	5,49	1,73	1,83
Bi-Flex HB	877FAB(Y)	118,9	118,9	1.320	0.400	0.100	5,46	1,7	5,49	1,73	1,83
Bi-Flex	677AD(Y)	118,9	118.828	0.190	0.192	0.173	5.431	1.682	5,45	1,69	1,79
Q-Flex	640AD(Y)	118,9	118,9	1,243	0.400	0.100	5,46	1,67	5,49	1,73	1,83
Bi-Flex Toric Preloaded	677CTA(Y)	118,9	118.828*	0.190*	0.192*	0.173*	5.431*	1.682*	5,45	1,69	1,79
Bi-Flex Toric	677TA(Y)	118,9	118.828*	0.190*	0.192*	0.173*	5.431*	1.682*	5,45	1,69	1,79

IOL-Injector-OVD compatibility chart available: <https://medicontur.com/professionals/compatibility>

\* Optimized IOL constants: n=400, date: 2018.

\*\* Barrett Universal II and Holladay II constants were calculated with [https://calc.apacrs.org/barrett\\_universal2105/](https://calc.apacrs.org/barrett_universal2105/) and <http://www.hicsoap.com> online calculators.



Focusing on your  
vision since 1989.

Some of the products shown in this IOL chart may not be registered in your country and may not be available there.  
Please contact our local distributor for availability of our products in your market.

The trademarks and logos used in this document are the property of MEDICONTUR Medical Engineering Ltd.  
©2020 MEDICONTUR Medical Engineering Ltd. All rights reserved.

# MEDICONTUR

Material. Design. Optics.

**Head Office - Zsámbék**

HU-2072 Herceghalmi Road 1  
Tel: +36 23 56 55 55  
mc@medicontur.hu

**Sales Office - Budapest**

Invoice: HU-1113 Karolina Street 65  
Mailing: HU-1113 Daróczy Street 80  
Tel: +36 1 214 20 33  
iol@medicontur.com

**International Office - Plan-les-Ouates**

CH-1228 Chemin du Champ-des-Filles 36  
export@medicontur.com

CE  
1639